

Connecting with Windows Vista 100 Mile NetShop Ltd.

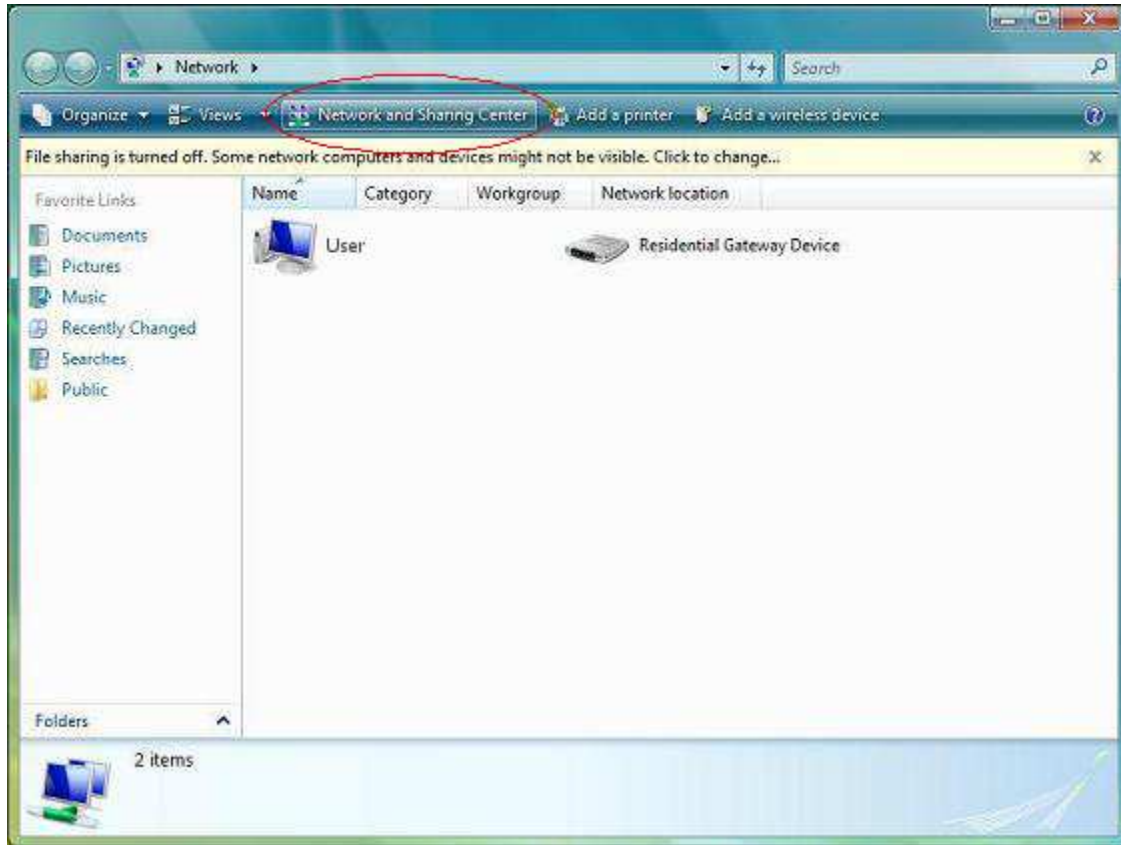
Print Guide

A step-by-step walkthrough

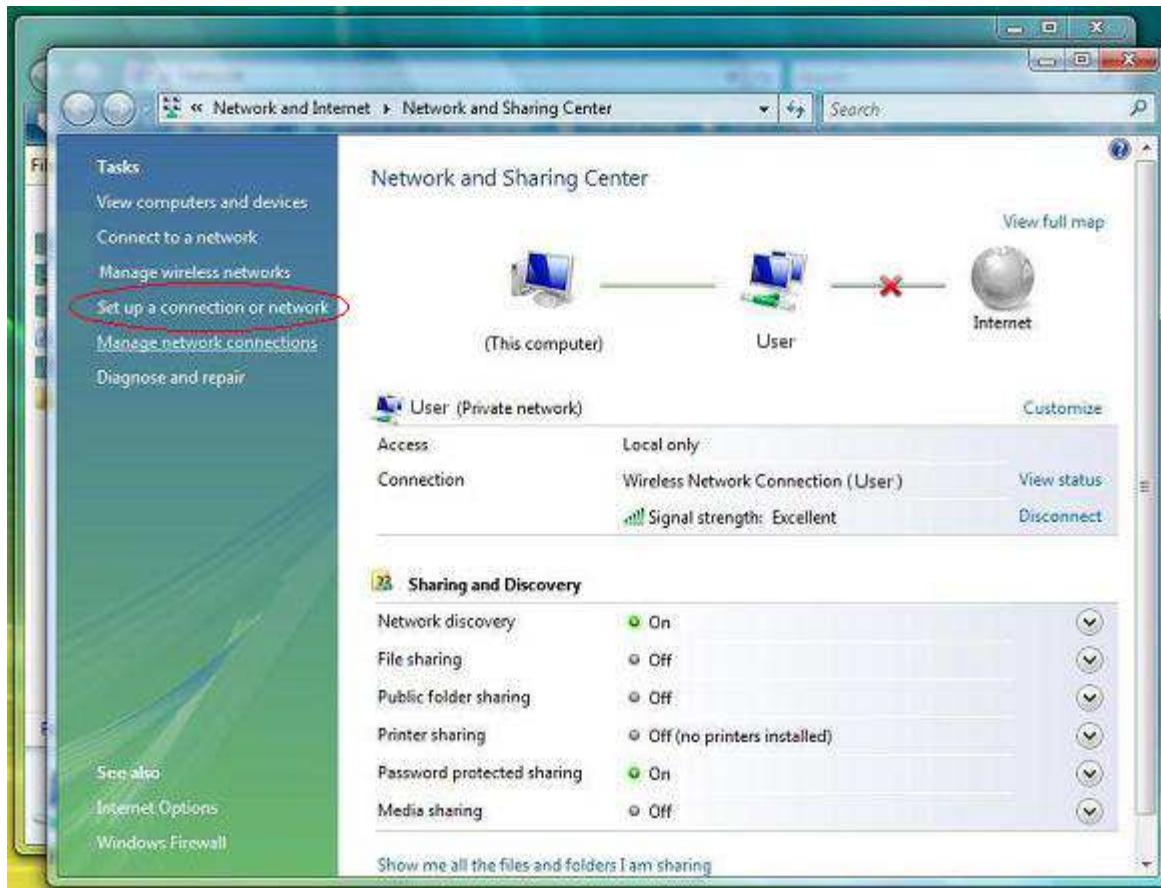
1) Click on the **Start** button and then click on the **Network** option.



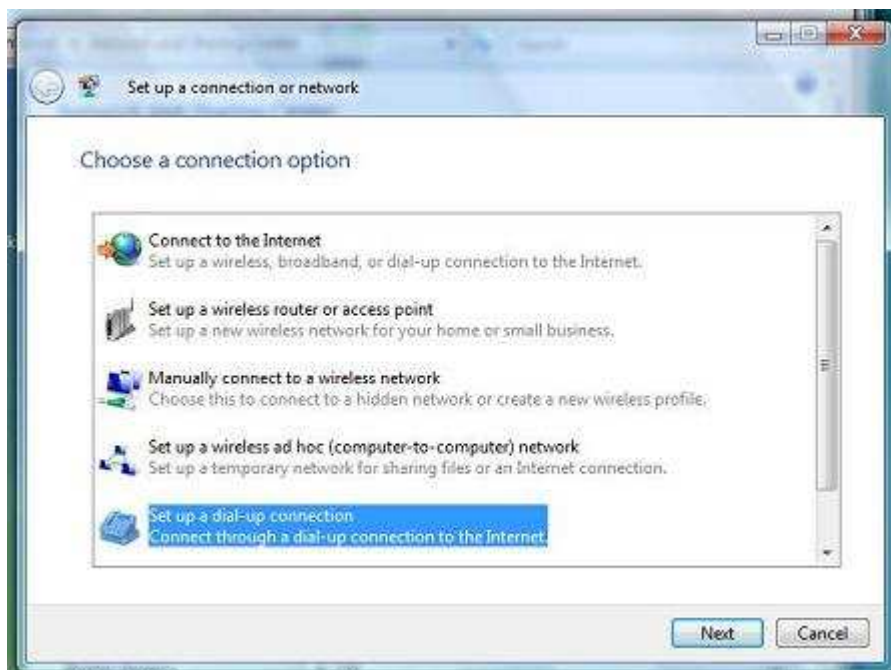
2) Select **Network and Sharing Center** from the top area of the window.



3) Next, click on **Set up a connection or network**.



4) Select **Set up a dial-up connection** from the menu options. Press **Next**.



5) Set up the dial-up number which is **395-1925**. Enter your **User name** and **Password** in the appropriate fields. There is also an option at the bottom to select if multiple people will use this connection.

You may also want to have the password remembered by putting a checkmark in the box that says **Remember this password**.

Click the **Connect** button and you are done!



The screenshot shows a Windows dialog box titled "Set up a dial-up connection". The main instruction is "Type the information from your Internet service provider (ISP)". The fields are filled as follows:

- Dial-up phone number: 395-1925
- User name: Username
- Password: [masked with dots]
- Connection name: 100 Mile NetShop

There are two checkboxes below the password field: "Show characters" (unchecked) and "Remember this password" (checked). At the bottom, there is a checkbox "Allow other people to use this connection" which is checked. Below this checkbox is the text: "This option allows anyone with access to this computer to use this connection." There is a link "I don't have an ISP" and two buttons: "Connect" (highlighted) and "Cancel".