

Connecting with Windows 2000 100 Mile NetShop Ltd.

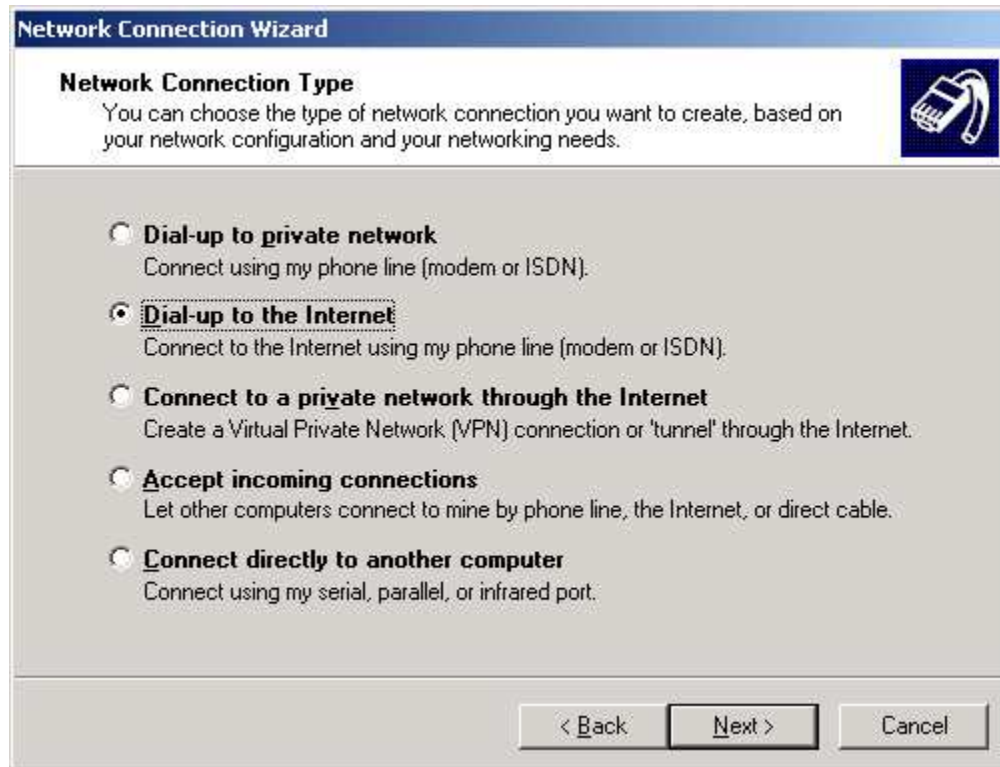
Print Guide

A step-by-step walkthrough

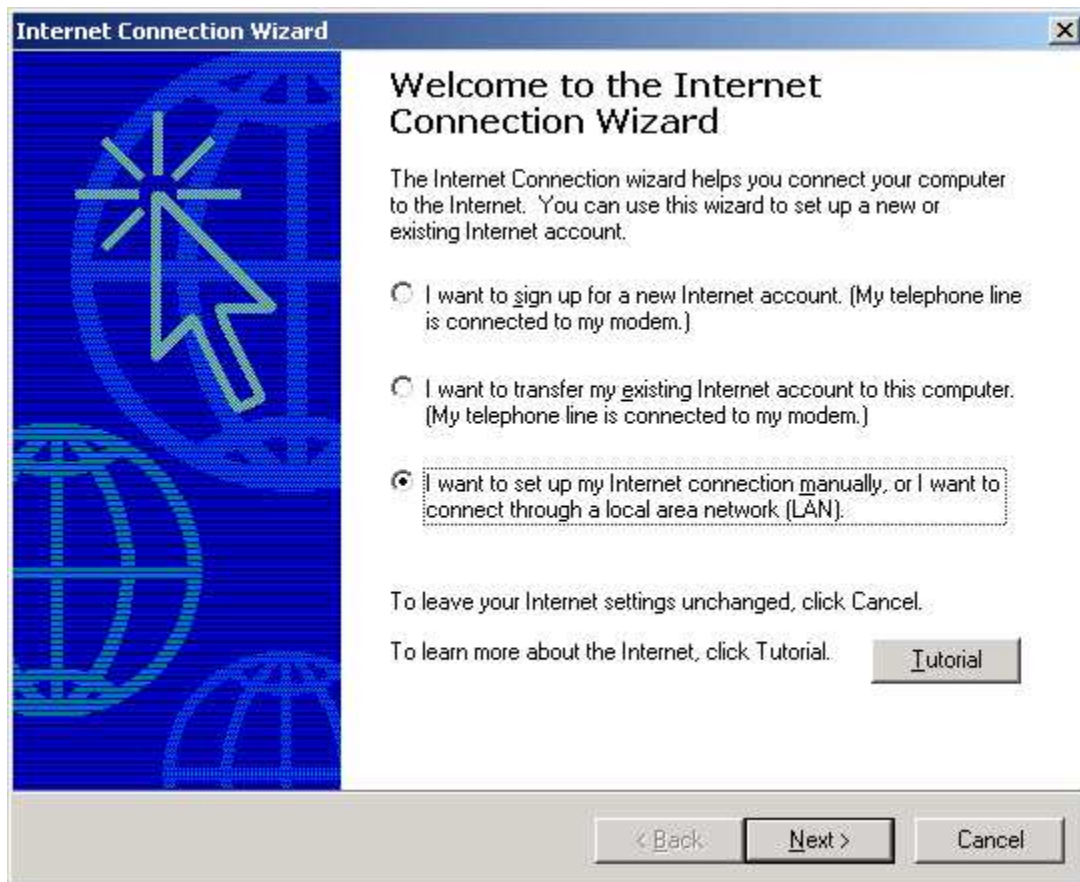
1) From the **Start** button, select **Settings**, then **Network and Dial-up Connections**, then **Make New Connection**. This will start the Network Connection Wizard. Click **Next**.



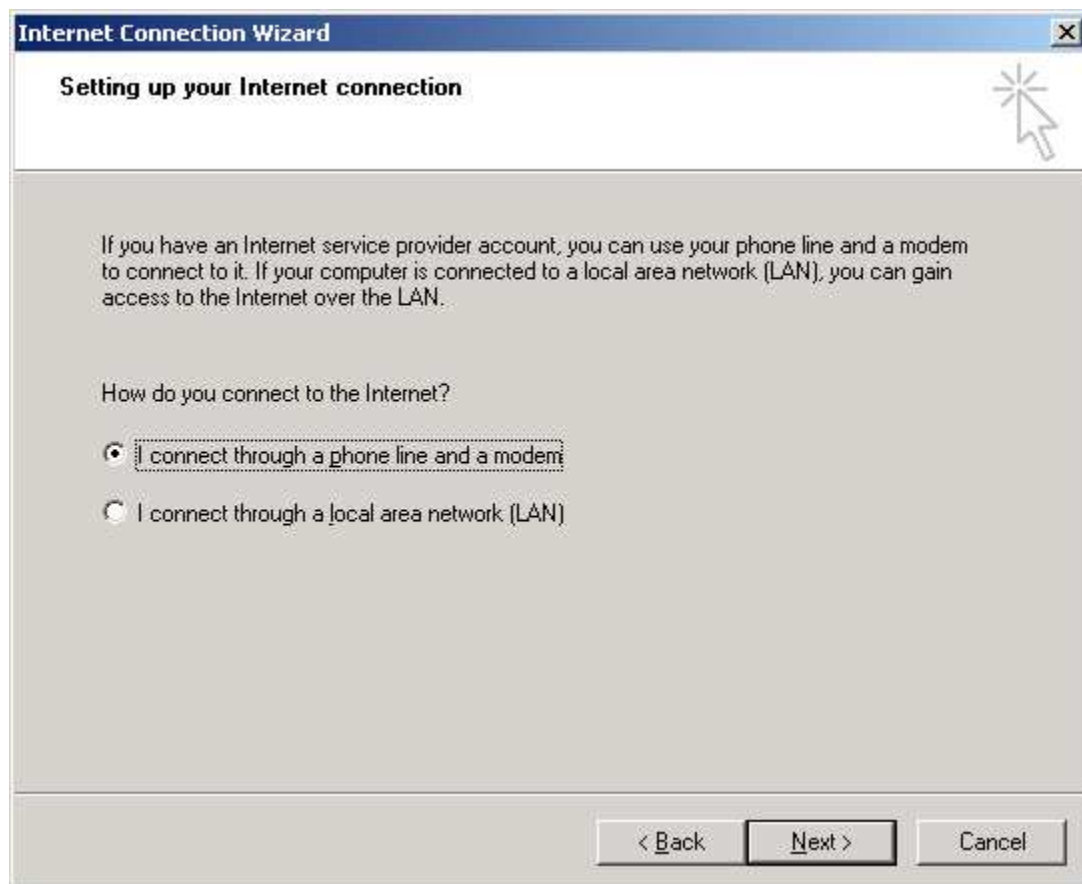
2) On the next screen, make sure you select **Dial-up to the Internet**, then click **Next**.



3) Next, select **I want to set up my Internet connection manually** then press **Next**.



4) Here you select **I connect through a phone line and modem**. Press **Next**.



5) Enter the dial-up telephone number, which is **395-1925**. Uncheck the box that says **Use area code and dialing rules** then press **Next**.

Internet Connection Wizard [X]

Step 1 of 3: Internet account connection information

Type the phone number you dial to connect to your ISP.

Area code: [] Telephone number: [395-1925]

Country/region name and code:
[United States of America (1)]

Use area code and dialing rules

To configure connection properties, click Advanced.
(Most ISPs do not require advanced settings.)

[Advanced...]

[< Back] [Next >] [Cancel]

6) Enter your dial-up username and password, then click **Next**.

Internet Connection Wizard [X]

Step 2 of 3: Internet account logon information

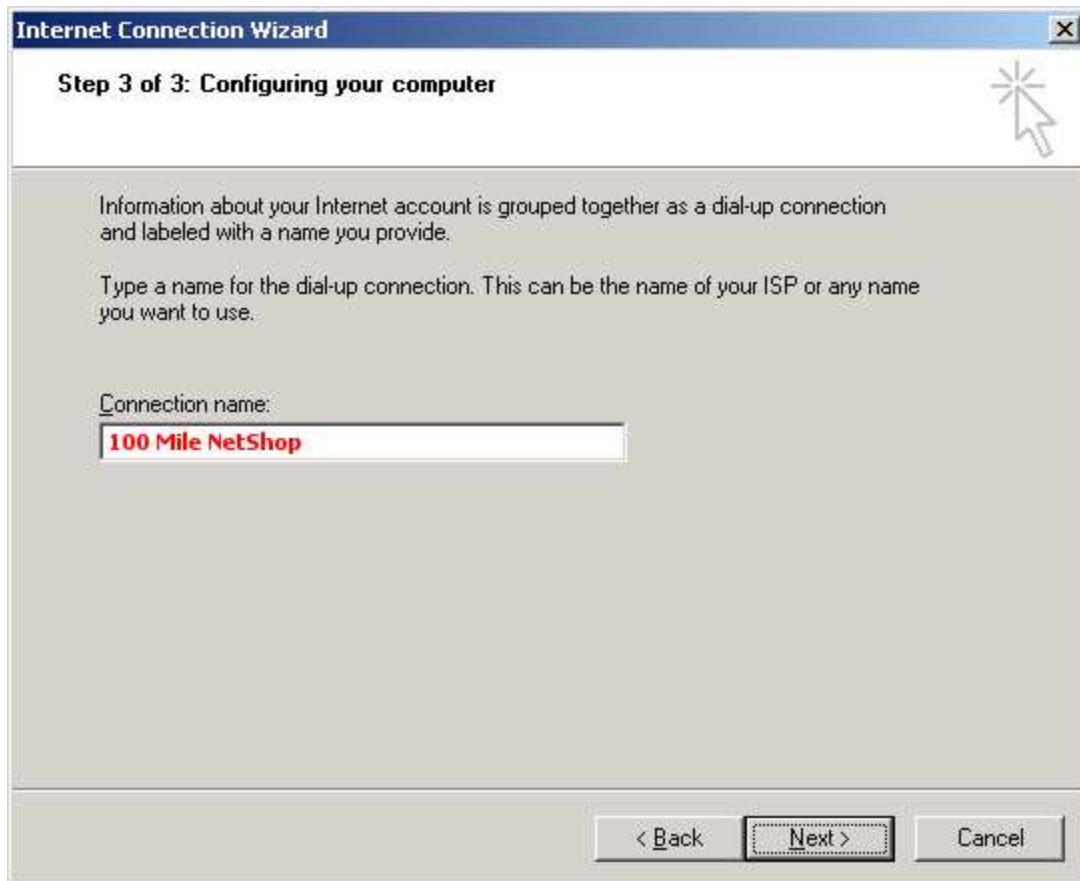
Type the user name and password you use to log on to your ISP. Your user name may also be referred to as your Member ID or User ID. If you do not know this information, contact your ISP.

User name:

Password:

< Back Next > Cancel

7) For the connection name, enter **100 Mile NetShop** then press **Next**.



8) To set up your e-mail account now click **Yes**, otherwise click **No**, then click **Next**.



9) If you selected **Yes** and you wish to set up your email now, [click here](#). If you selected **No** for e-mail account setup, you're ready to connect to the Internet! Clear the checkbox if you don't want to connect to the Internet right now, then click **Finish**.



Completing the Internet Connection Wizard

You have successfully completed the Internet Connection wizard. Your computer is now configured to connect to your Internet account.

After you close this wizard, you can connect to the Internet at any time by double-clicking the Internet Explorer icon on your desktop.



To connect to the Internet immediately, select this box and then click Finish.

To close the wizard, click Finish.

< Back Finish Cancel